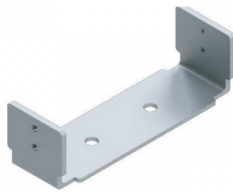


Double Glazed Service Duct/Mullion Mounting Bracket - SS (Model: G.DK.AC.030)



- When connecting the Double Glazed Profiles together 3 items are required for installation.
- The Double Glazed Service Duct/ Mullion Mounting Profile which attaches to the Double Glazed profile itself.
- The Double Glazed Service Duct/Mullion Mounting Bracket which attaches to the mounting profile and connects to the two sections together and also screws into the ground. This is then finished with the Mullion Cover profile.
- The Double Glazed Centre Profile Cover finishes the Double Glazed Partition Bottom section with the packers propping the glass up from the section.

Attributes:

Product Code: G.DK.AC.030

Unit Of Sale: Each
