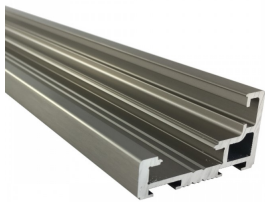


L Type Door Frame - Anodised (Model: G.DK.SG.SA.004)



- The L-type aluminium door frame with integrated hinge & receiver profile is suitable for glass thicknesses of 8-10mm. The recommended max door height is 2400mm. Above a height of 2200 mm, it is recommended to use 3 hinges.
- This profile is designed in a L type shape to sit in any reveal size over 50mm and create a rebate for the glass door to reduce both noise and air movement.
- Installing of the hinges requires no drilling or milling and they can be adjusted in seconds which makes this system a favourite for the installer.



Attributes:

Product Code: G.DK.SG.SA.004

Unit Of Sale: 6 Metres

