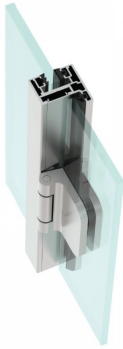


H Type Door Frame - Anodised ( Model: G.DK.SG.SA.006 )



- The H-type aluminium door frame with integrated hinge & receiver profile is suitable for glass thicknesses of 8-10mm. The recommended max door height is 2400mm. Above a height of 2200 mm, it is recommended to use 3 hinges.
- Installing of the hinges requires no drilling or milling and they can be adjusted in seconds which makes this system a favorite for the installer.

Attributes:

**Product Code:** G.DK.SG.SA.006  
**Unit Of Sale:** 6000mm

