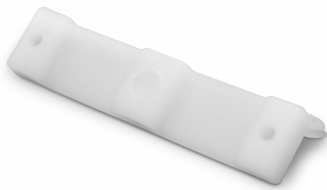


ROBUSTUS Damping device and anti-theft device (Model: GSTR009)



- Adjustable damping and anti-theft devices brake and hold the sashes and prevent them from being lifted off at their end position.

- The damping devices are integrated out of sight on the right and left-hand side of the double top guide.

Attributes:

Product Code: GSTR009

Unit Of Sale: Each

