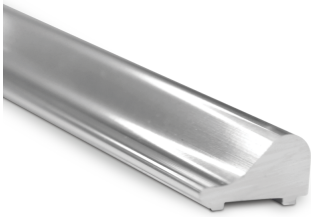


Shower Door Threshold - Polished Chrome (Model: JTH-02)



- Mounted directly below the shower door to let the water drain back into the shower stall.
- Ideal for flat or out-sloping curbs, the rounded low contour of the half round threshold will not harm feet.

Attributes:

Product Code: JTH-02

Unit Of Sale: 2.49 Mtr

