

Pensilina Canopy System 1000mm SS Effect For 17.52mm Glass ( Model: K.CAN.PENS.1000.SS )



La Pensilina is a cantilever horizontal glazing system requiring no rods and no glass cut out. The pane is held by a continuous honeycomb aluminium profile, designed to resist operating loads covering all possible load combinations (snow and wind), in addition to the weight of the glass itself. The profile is anchored to the wall by means of mechanical or chemical anchors, depending on the type of support. Supplied in a brushed stainless steel like finish, this profile can be easy cut to length to suit the project. This system can also be combined with LED lighting installed in the track to allow the light to be carried out through the glass to the glass edge.

• **Specification**

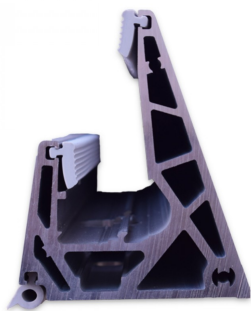
- Glass Thickness: 16.76mm or 17.52mm
- Glass Type Recommended: Toughened Laminate Combination (Tested With SentryGlas)
- Maximum Projection: 1000mm
- Maximum Length: 1000mm

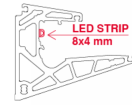
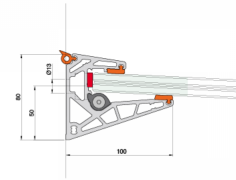
**GLASS NOT SUPPLIED\***

Attributes:

**Product Code:** K.CAN.PENS.1000.SS

**Unit Of Sale:** Each \*\*\*\* GLASS IS NOT SUPPLIED\*\*\*\*





It is possible to insert LEDs between the profile and the glass.

