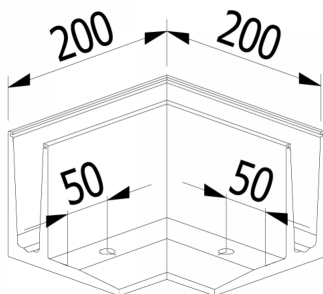
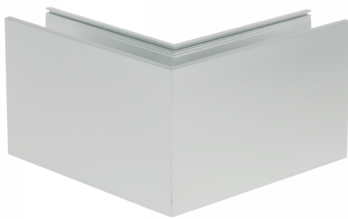


OnLevel 3010 F Type 90 Degree External Corner (Model: K.ON.10.3010.350.11)



- Suitable for line loads up to 3kN in accordance with BS6180.
- Using the Flex-Fit System, the installation can be done from one side only and glass adjusted accordingly.
- Pre drilled every 300mm and suitable for an M16 fixing.
- Supplied in plain anodised aluminium in 2.5 metre lengths.
 - Suitable for line loads up to 0.74kN in accordance with BS6180.
 - Using the Flex-Fit System, the installation can be done from one side only and glass adjusted accordingly.
 - Pre drilled every 360mm and suitable for an M16 fixing.
 - Supplied in plain anodised aluminium in 2.5 metre lengths.
 - Non-stock item. Shipped direct from Manufacturer. Delivery usually 3-7 days.

Attributes:

Product Code: K.ON.10.3010.350.11

Unit Of Sale: Each