

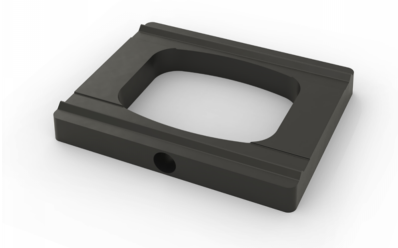
POSlglaze Waterproof Drainage Block Kit - Incl Sealant (Model: KCV037)



Balcony Seal® is a revolutionary product that provides a solution to both water drainage and waterproofing on a balcony installation. It comprises of drain blocks that sit underneath the balustrade channel. Notches on the top side of the drain blocks locate into the rebates of the Crystal View channel, locking it into position before the system is bolt-fixed to the substrate through each drain block. The gaps between the drain block are your water drainage channels. The drain blocks are subsequently filled with sealant to create a fully waterproofed balustrade installation.

• Included In The Kit

- 15 balcony Seal Drain Blocks
- 2 Tubes Of Sealant
- **Dimensions**
- W = 73mm
- H = 12.5mm
- L = 90mm



Attributes:

Product Code: KCV037

Unit Of Sale: Each

