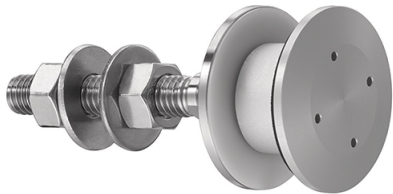


## Flat Head Articulated Bolt For 8 - 15mm Insulated Glass Unit ( Model: KSP.R1039-0815-1465 )

These items are not held in stock and will require approximately 1-2 weeks delivery time

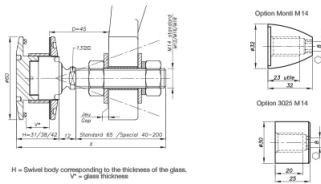


**Attributes:**

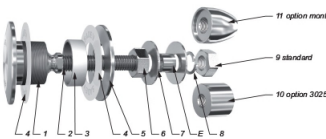
**Product Code:** KSP.R1039-0815-1465

**Unit Of Sale:** Each

**Dimensions**

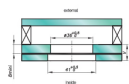


**Components**



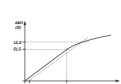
MARK	QUANTITY	DESCRIPTION	MATERIAL
1	1	Sealant body	IG-CRM-Ma 17-12.2 kg per EN 10388-3
2	1	Threaded hole	IG-CRM-Ma 18-5.2 kg per EN 10388-3
3	1	Glass hole primer	AW-1050A kg per EN 1753-5:04/05:5 kg
4	2	Contact washer	W88-09000000000000000000
5	1	Glass hole 250	IG-CRM-Ma 17-12.2 kg per EN 10388-3
6	1	NLZ DIN 504	Al
7	2	Washer	Al
8	1	Load washer 20x17	Al
9	1	NLZ DIN 504	Al
10	1	3025 Contact - Option	IG-CRM-Ma 17-12.2 kg per EN 10388-3
11	1	Mordil contact - Option	IG-CRM-Ma 17-12.2 kg per EN 10388-3

**How to Use**



It is required to provide the following information with each request for quotation: (1) - 15 mm maximum, 0.5 mm minimum, 0.5 mm (0.5 to 1.5 mm) thickness for depth and diameter of the threaded hole to be drilled (see the reference of the table to be used to request, and the reference of the weight supported by the design of the hole).

**Method of Performance**



Displacement (mm)	Load (N)
0	0
10	100
20	200
30	300
40	400
50	500
60	600
70	700
80	800
90	900
100	1000