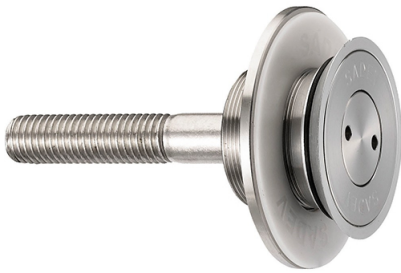


**Countersunk Fixed Bolt For 8 - 15mm Thick Glass (Outside Fix ( Model: KSP.V2002-0815-1266 )**



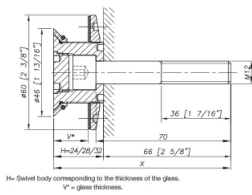
Fixed bolt with a countersunk head for use in spider glazing systems. Suitable for glazing from the outside or blind access glazing. Manufactured using 316 grade stainless steel. Standard 66mm long axis and suitable for 8 - 15mm thick glass. Please see the other bolts in the range for additional glass thicknesses. Special dimension glass bolts available on request. Glassparts recommend using thread locking compound whenever possible. These items are not held in stock and will require approximately 1-2 weeks delivery time

**Attributes:**

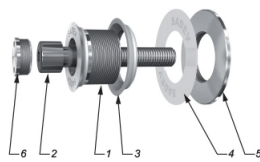
**Product Code:** KSP.V2002-0815-1266

**Unit Of Sale:** Each

**Dimensions**

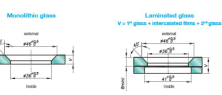


**Components**



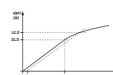
MARK	QUANTITY	DESCRIPTION	REFERENCE
1	1	Body	ISO 9184:17-12.2 as per EN 10088-3
2	1	Ball CR12 M12-T5	AS
3	1	Clear hole grommet	AW 10054 as per EN 873-3 / AS 56 EN
4	1	Conical washer	White polyamide / nylon 6/6/6/6/6
5	1	Clear nut 6/60	ISO 9184:17-12.2 as per EN 10088-3
6	1	Cover cap	ISO 9184:17-12.2 as per EN 10088-3

**How to fit**



Available for glass thickness from 8 to 20.0mm, for other thickness please contact us.  
 It is important to provide the following information when order request for glass components: 1) Glass composition: 6/6, 6/6/6, 6/6/6/6, 6/6/6/6/6  
 2) Thickness: the length of the laminated glass (the thickness of the glass components) (6/6, 6/6/6, 6/6/6/6) (the thickness of the spider to be used as support, the thickness of the assembly support by the design of the spider)

**Mechanical Performance**



Other strength	Reference
Ball (EN 10088-3)	AS
Clear nut (EN 10088-3)	ISO 9184:17-12.2 as per EN 10088-3

\*UL - Ultimate Load (kN) - half of the static load (EN 10088-3)  
 \*UL - Ultimate Load (kN) - half of the static load (EN 10088-3)  
 \*UL - Ultimate Load (kN) - half of the static load (EN 10088-3)