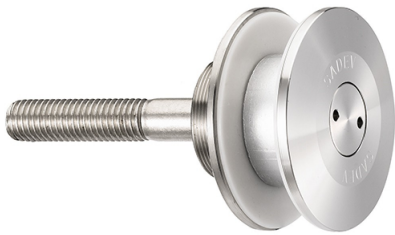


60mm Dia. Flat Head Fixed Bolt For 8 - 15mm Thick Glass (Out (Model: KSP.V2004-0815-1266)



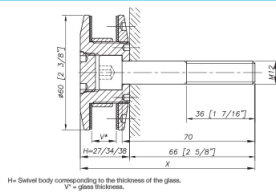
Fixed bolt with a 60mm diameter flat head for use in spider glazing systems. Suitable for glazing from the outside or blind access glazing. Manufactured using 316 grade stainless steel. Standard 66mm long axis and suitable for 8 - 15mm thick glass. Please see the other bolts in the range for additional glass thickness'. Special dimension glass bolts available on request. Glassparts recommend using thread locking compound whenever possible. These items are not held in stock and will require approximately 1-2 weeks delivery time

Attributes:

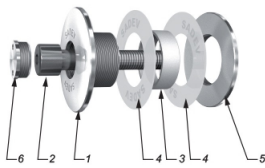
Product Code: KSP.V2004-0815-1266

Unit Of Sale: Each

Dimensions



Components



ITEM	QUANTITY	DESCRIPTION	UNIT/PRICE
1	1	Body	X2 Cr Ni Mo 17 12 2 as per EN 10280-3
2	1	Washer	A4
3	1	Glass hole grommet	AW-1000K as per EN 573-3 / AW-25K
4	2	Contact washer	White (epoxy) / White polyethylene
5	1	Glass seal ring	X2 Cr Ni Mo 17 12 2 as per EN 10280-3
6	1	Cover cap	X2 Cr Ni Mo 17 12 2 as per EN 10280-3

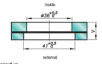
How to Use

Monothetic glass



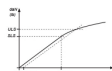
Laminated glass

V = V' glass + interlayer film + V'' glass



Available for glass thickness from 6 to 19.0mm. For other thickness please contact us.
 * It is required to provide the following information and send request for glass specification (in 10mm resolution, U.S.A benchmark, A.S.2-10-15) including the length and diameter of the threaded part for standard dimensions (EN10280-3). The reference of the spider to be used as support, or the diameter of an existing spider for the diameter of the spider.

Technical Information



Shear strength	Part of capacity
162.0 MPa (2300 N/mm ²)	100% (100% R _s)
145.0 MPa (2090 N/mm ²)	90% (90% R _s)

*R_s = Ultimate Limit State. Yield of the double bolt (EN10280-3) based on glass manufacturer's data.
 *R_s = Yield strength calculation according to EN 10280-3 and shear strength calculation according to EN 10280-3