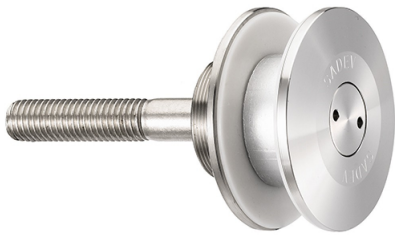


60mm Dia. Flat Head Fixed Bolt For 22 - 26mm Thick Glass (Ou (Model: KSP.V2004-2226-1266)



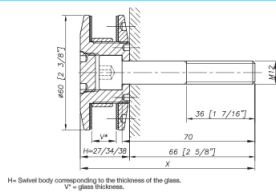
Fixed bolt with a 60mm diameter flat head for use in spider glazing systems. Suitable for glazing from the outside or blind access glazing. Manufactured using 316 grade stainless steel. Standard 66mm long axis and suitable for 22 - 26mm thick glass. Please see the other bolts in the range for additional glass thicknesses. Special dimension glass bolts available on request. Glassparts recommend using thread locking compound whenever possible. These items are not held in stock and will require approximately 1-2 weeks delivery time

Attributes:

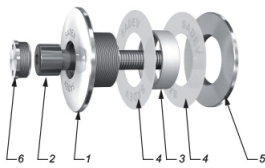
Product Code: KSP.V2004-2226-1266

Unit Of Sale: Each

Dimensions



Components



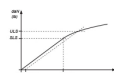
ITEM	QUANTITY	DESCRIPTION	UNIT/PRICE
1	1	Body	X2 Cr Ni Mo 17 12 2 as per EN 10268-3
2	1	Washer	A4
3	1	Glass hole grommet	AW-1000K as per EN 573-1 / AW-25K
4	2	Contact washer	White (polyester) / White (polyethylene)
5	1	Glass of 22-26	X2 Cr Ni Mo 17 12 2 as per EN 10268-3
6	1	Cover cap	X2 Cr Ni Mo 17 12 2 as per EN 10268-3

How to Use



Available for glass thickness from 8 to 33 (3/8\"/>

Technical Information



Item strength	Part quantity
AW-1000K (EN 573)	2 (20 and 2000 N)

*UL5 - Ultimate Load Value: half of the static load (EN 1176) based on glass manufacturer's data.
 *UL5 - Tensile strength calculation according to EN 10268-3 and other strength calculation according to EN 10268-3