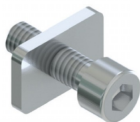


Bolt On Loft Style Mullion Bolt For 10mm Glass ( Model: G.DK.LOFT.012.10 )



- Available in three different lengths for different glass thicknesses.
- It is recommended that six bolts be used in a 3 metre length.
- The base profile must be drilled to allow the bolt through.

**Attributes:**

**Product Code:** G.DK.LOFT.012.10

**Unit Of Sale:** Set of 6

