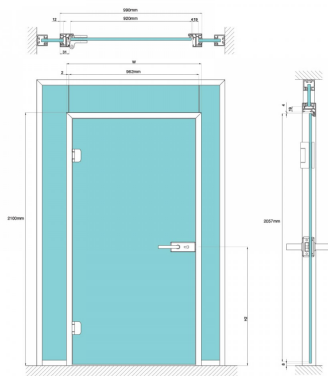


Dynamik 920mm X 2057mm Pre Cut Door Kit - Black ( Model: G.DK.SG.BK.920 )

Grey Anodised Standard Door Frame Kit pre cut to size to suit a 920mm x 2057mm door leaf.



- All the cleats needed to assemble are included.
- The corners are Pre mitred.
- Hinges sold separately see related items below.
- Glass Door thickness must be selected below so we can send the correct gasket for the door rebate.
- The Profile Gaskets must also be selected 6 metres will be required.
- Available in Anodised Grey and Black.

**Attributes:**

**Product Code:** G.DK.SG.BK.920

**Unit Of Sale:** Kit