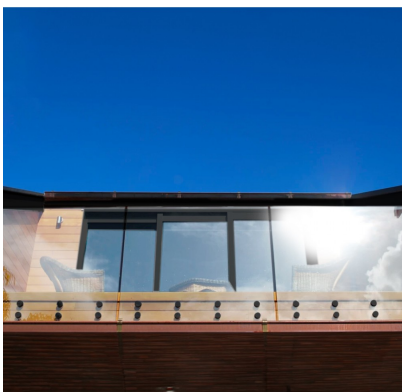
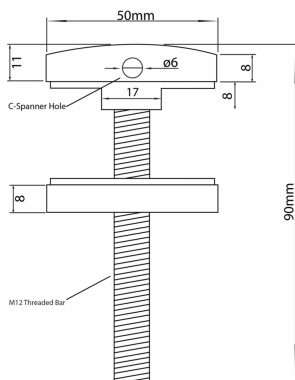


50mm Point Fixture M10 x 90 Bolt-316SS - BLACK (Model: K171545126.BK)



- Stainless steel point fixture in Black suitable for mounting glass panels both vertically and horizontally.
- Supplied as standard with a 90mm long threaded bar.
- Drill 20mm diameter hole in the glass.
- These fixings have been tested up to a 3kN line load in certain combinations and glass thicknesses.
- Test results available on request.
- Suitable for 10mm up to 21.5mm thick glass.
- may also be known as Glass Adapters or Glass Rail Standoffs
- *Optional extra M10 wood fixings at various lengths also available.*

Attributes:

Product Code: K171545126.BK

Unit Of Sale: Each